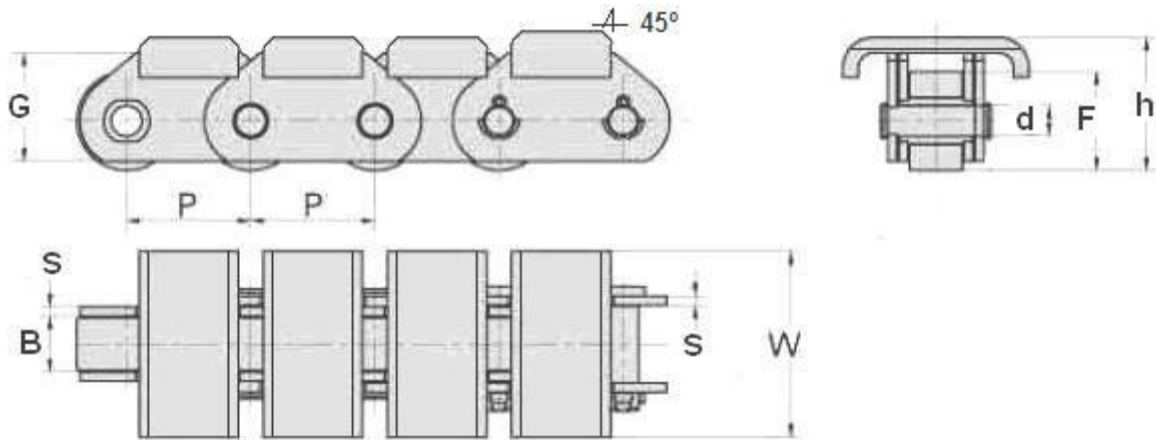




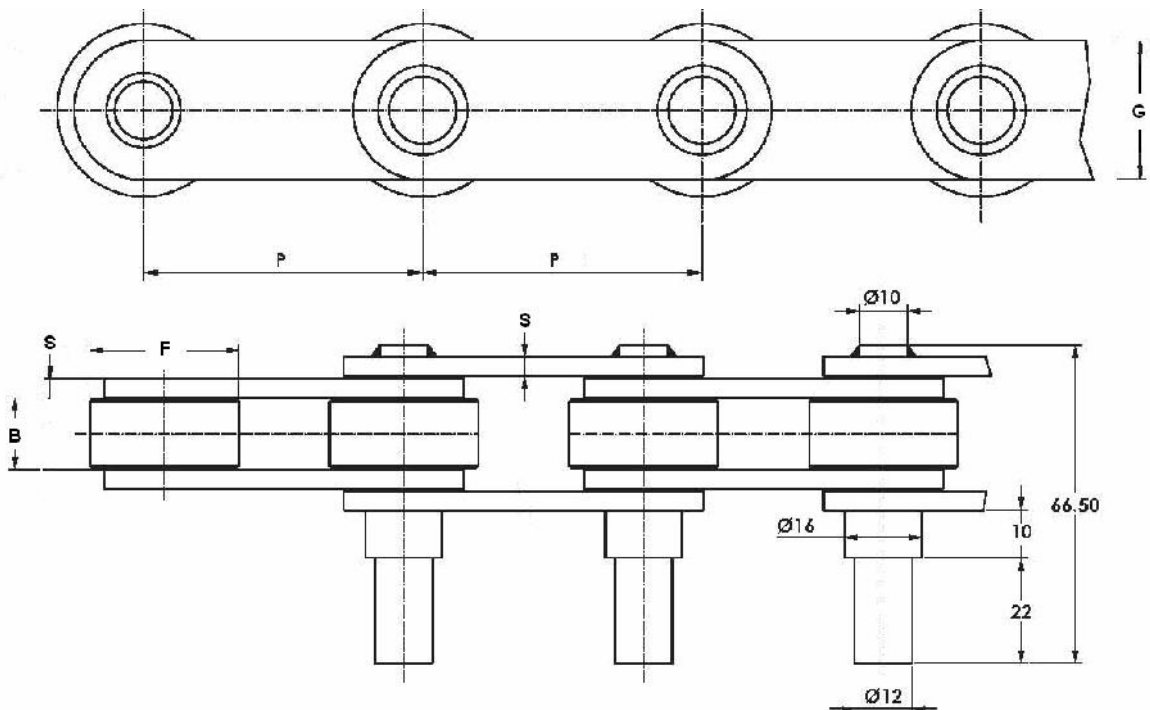
CADENAS APLICACIONES EN DIVERSAS INDUSTRIAS

INDUSTRIA MADERERA (Cadenas con Puentes Biselados)



Ref. Cadena	Paso P	Ancho Int. B	Ø Rod. F	Mallas		Ø Eje d	W	h	Carga Rotura Kg.
				G	S				
FV40-S4	40	18	32	35	3	10	58 (32 x 4)	42	4000
FV40-S5	40	18	32	35	3	10	60 (32 x 5)	43	4000

INDUSTRIA CONSERVERA (Cadena de Ejes prolongados con resalte)



Ref. Cadena	Paso P	Ancho Int. B	Ø Rod. F	Mallas		Ø Eje d	Carga Rotura Kg.
				G	S		
B034.50	50	15	31	26	4	10	3400 / 5800
B034.75	75	15	31	26	4	10	3400 / 5800

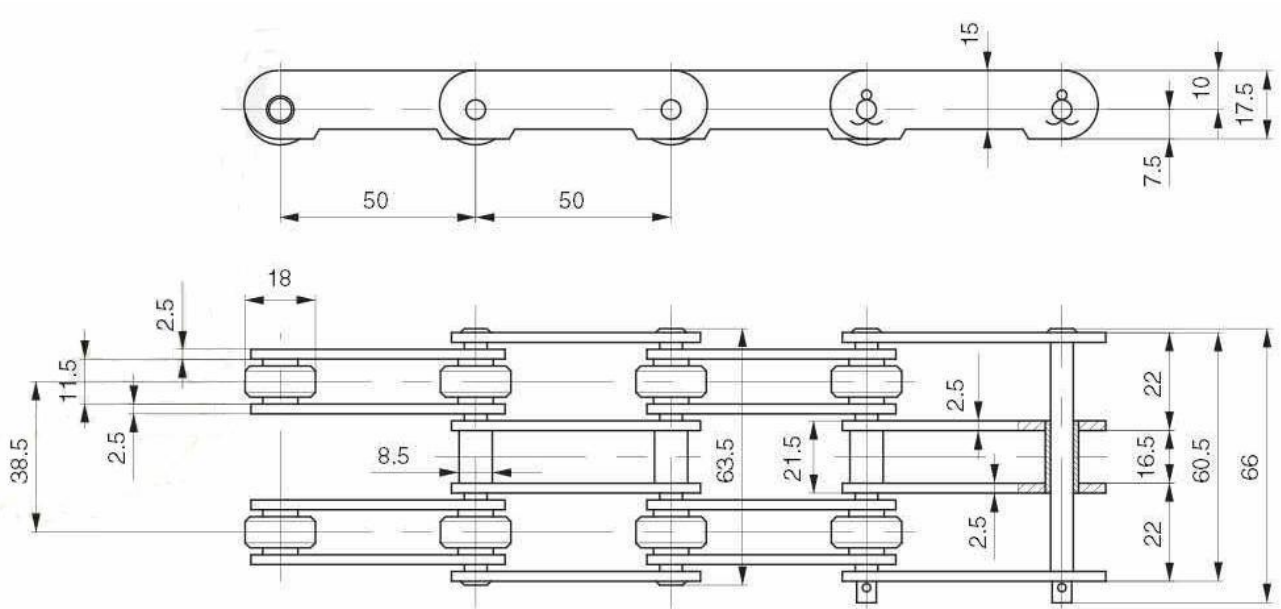


CADENAS APLICACIONES EN DIVERSAS INDUSTRIAS

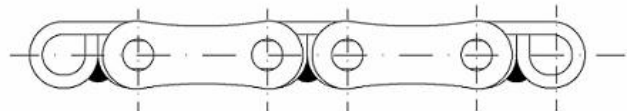
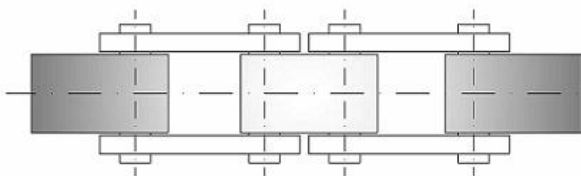
INDUSTRIA AGRARIA

Cadena Triple 50 x 11,5 x 18 Ø rodillo GALVANIZADA

Carga de Rotura 3.200 Kp.

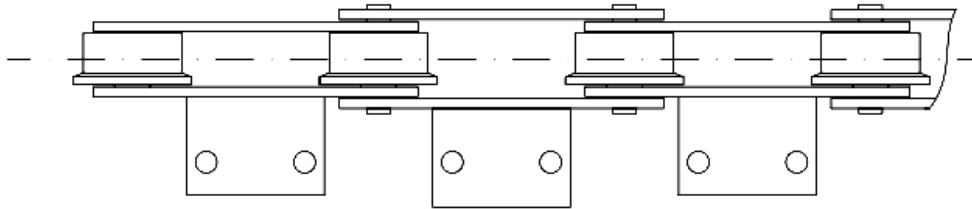
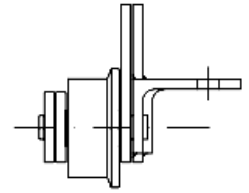
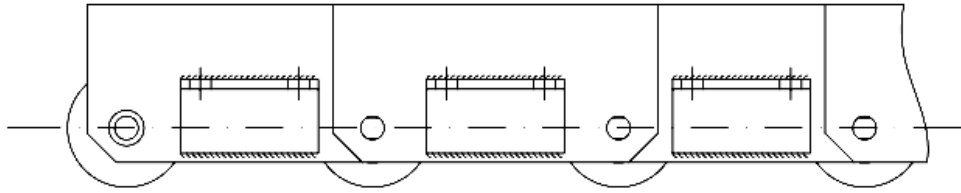
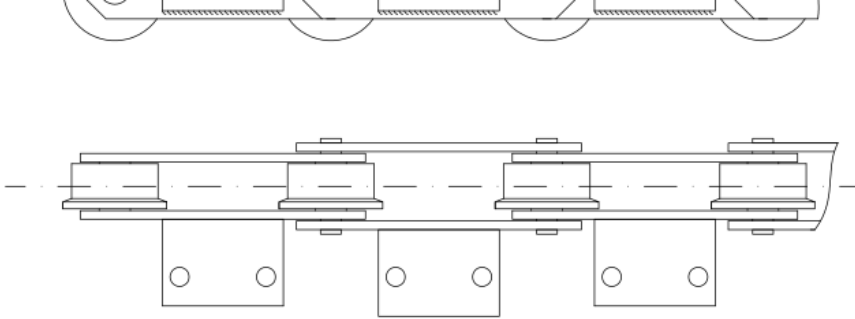


Cadena Lazos Soldados



CADENAS DE LAZOS Y MALLAS LATERALES

Ref.	Paso	Malla	Eje	Lazo	H	Tipo	L. eje	C.R.	Peso
80/6/12	81,75	50,75 + 31	12	30 x 5	24	Lazo	55	6.500	4,3
80/7/12	81	50 + 31	12	30 x 5	24	Lazo	56	9.000	4,7

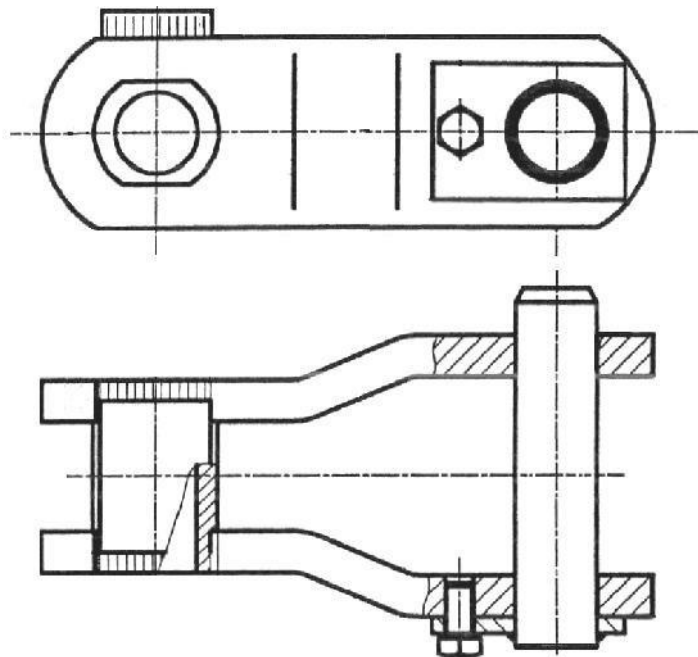


INDUSTRIA DEL RECICLAJE (Basuras)

Acodados Paso 150 x 30 x 40 Ø casquillo fijo

/

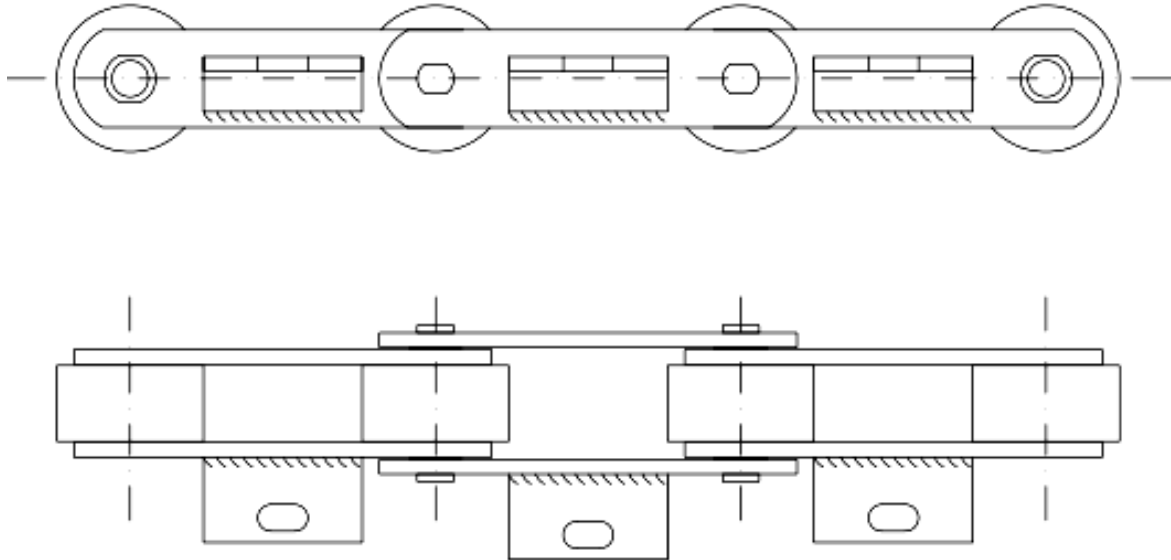
Acodados Paso 145 x 40 x 45 Ø casquillo fijo



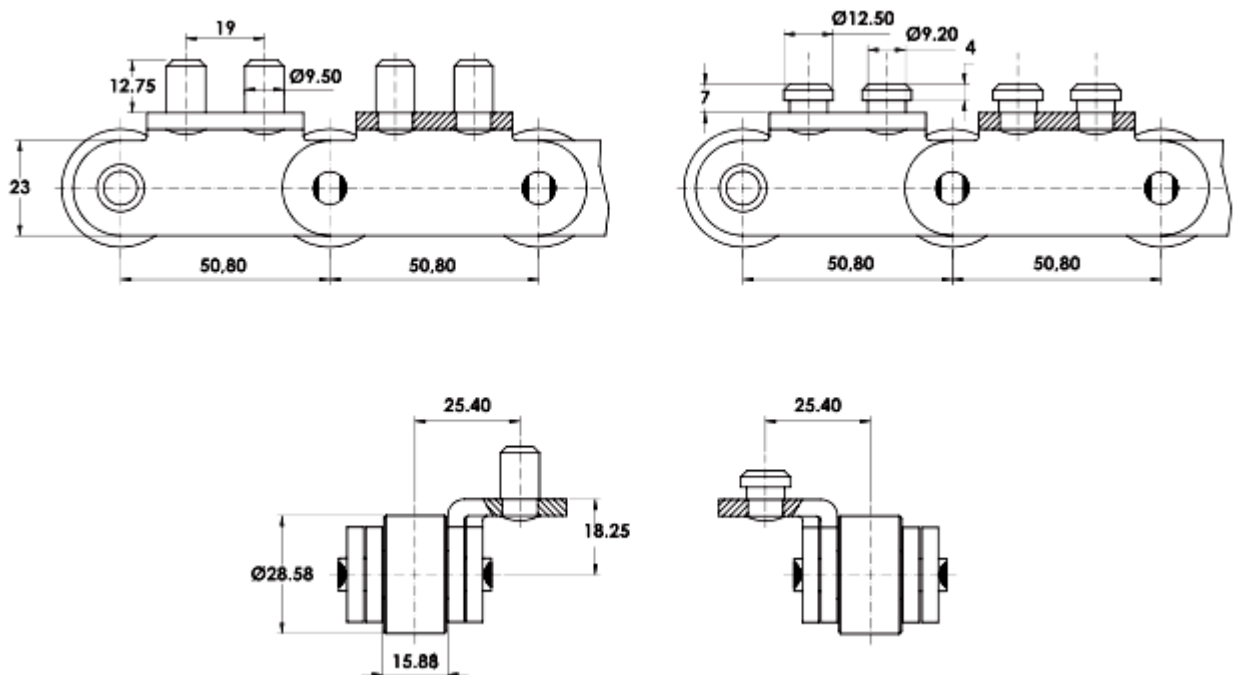


CADENAS APLICACIONES EN DIVERSAS INDUSTRIAS

Cadena de Rodillos Paso 125 x 32 x 60 Ø REFORZADA



INDUSTRIA DEL HELADO

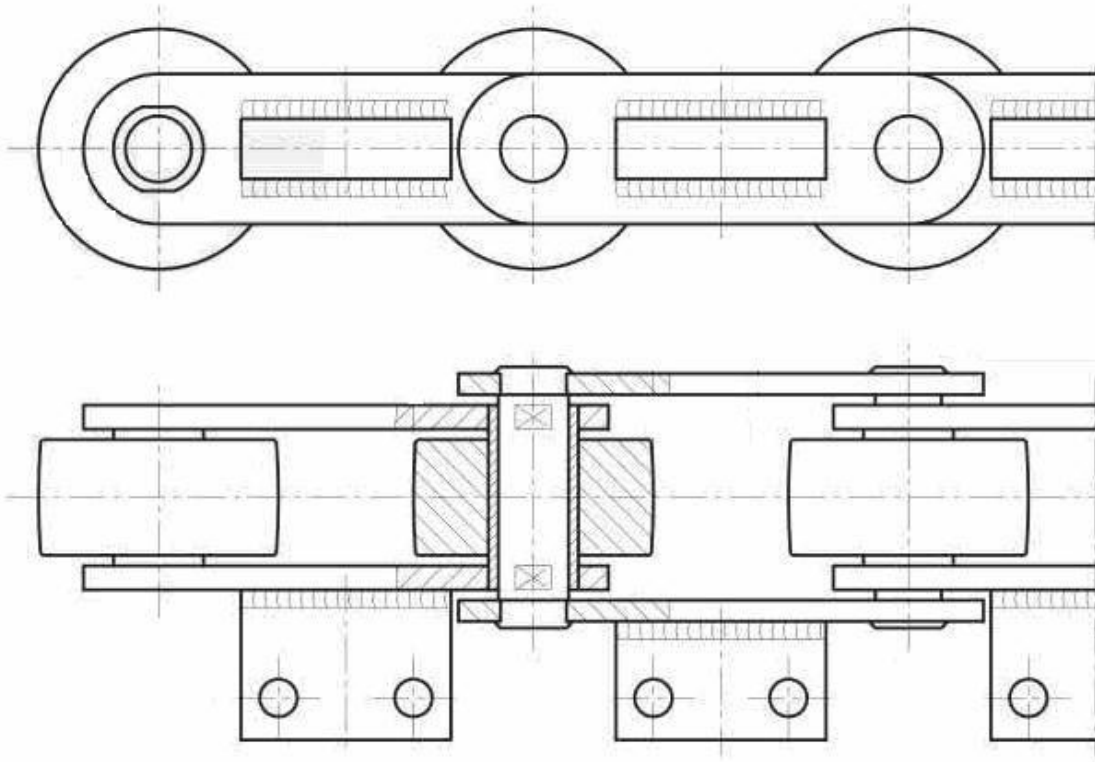




CADENAS APLICACIONES EN DIVERSAS INDUSTRIAS

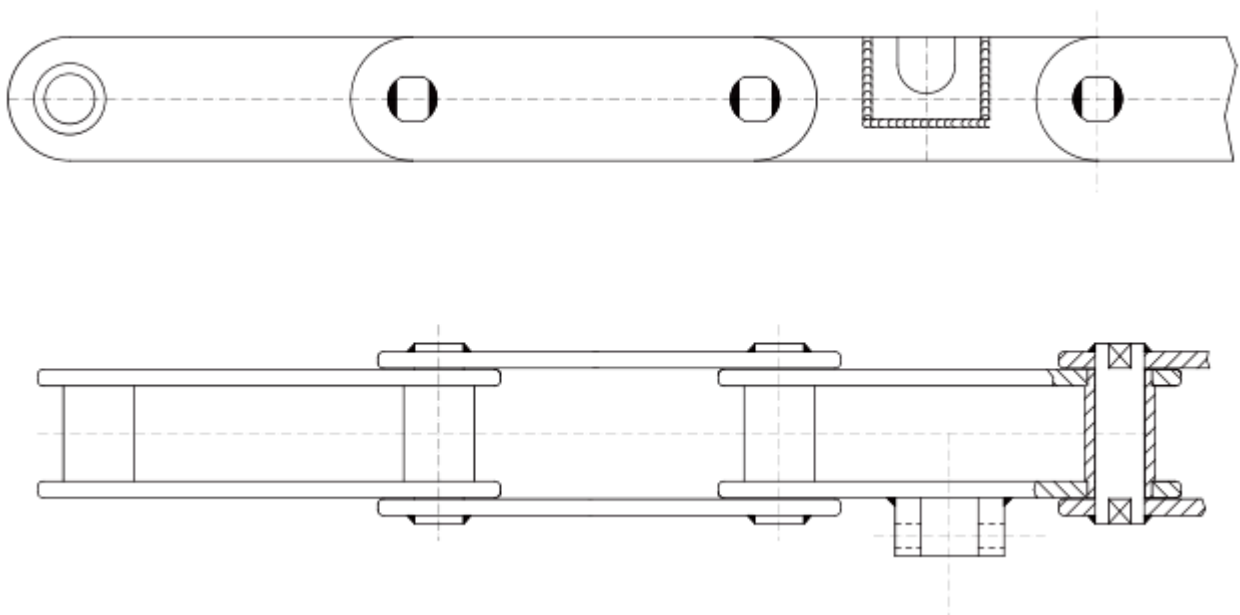
INDUSTRIA EMBOTELLADO

Cadena Lavadora de Botellas



INDUSTRIA AUTOLAVADO

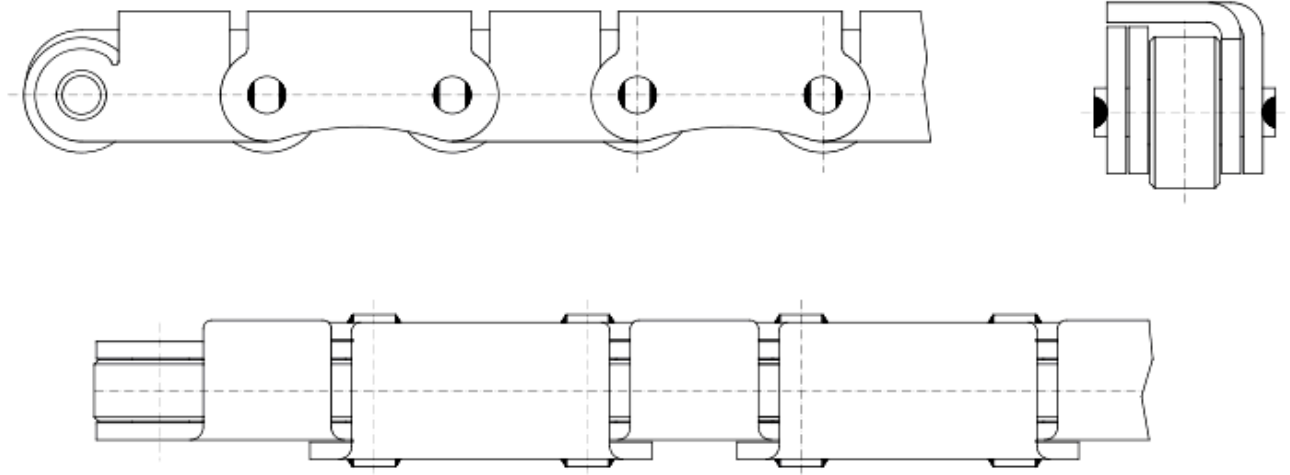
Cadena 125 x 35 x 26 Ø casquillo fijo





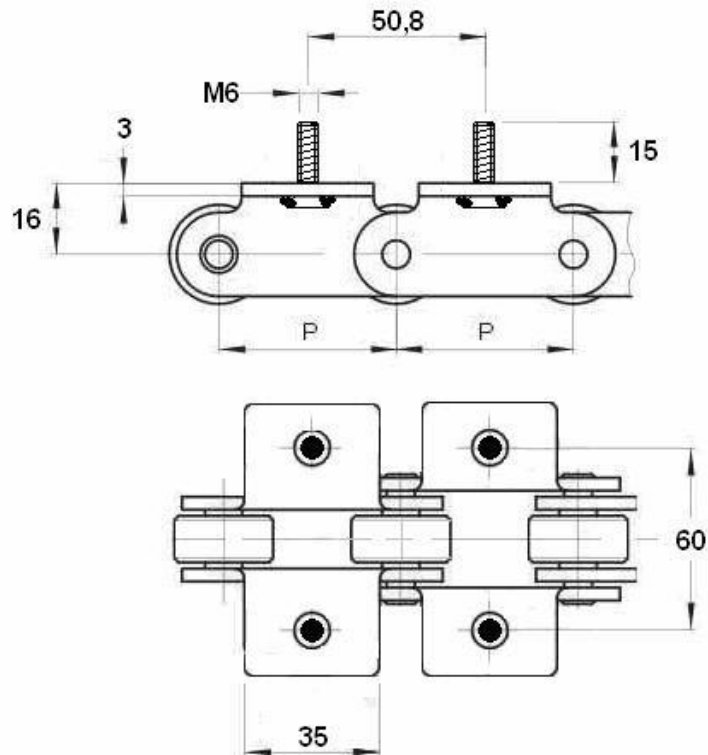
CADENAS APLICACIONES EN DIVERSAS INDUSTRIAS

Cadena 50 x 15 x 31 Ø rodillo



INDUSTRIA PAPEL

Cadena 50 x 16 x 25 Ø rodillo con tornillos M6





CADENAS APLICACIONES EN DIVERSAS INDUSTRIAS

ESTUCHADORAS

Cadena 10B-1 (DIN-8187) para engranar en rueda Z-24

